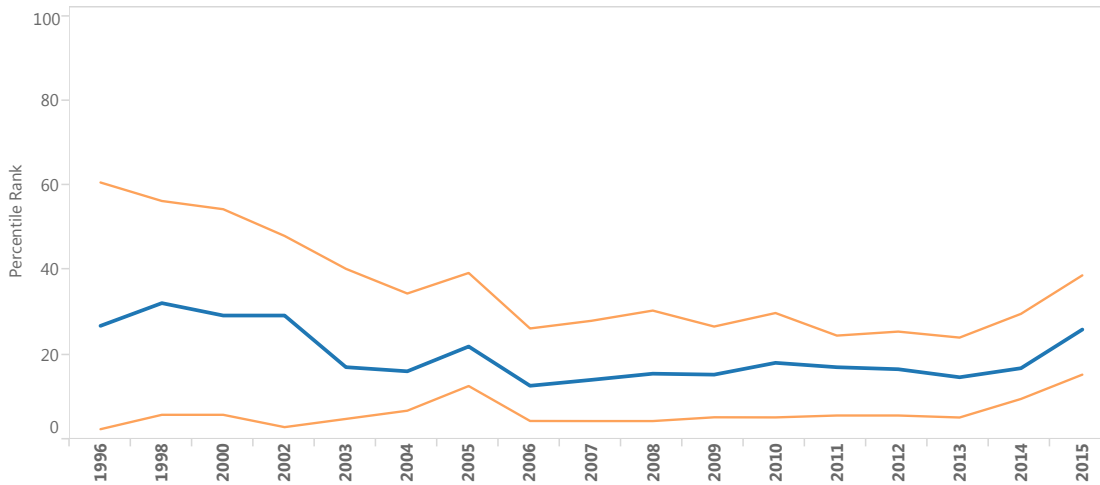


Worldwide Governance Indicators



Togo: Control of Corruption



Indicator

- Voice and Accountability
- Political Stability and Absenc..
- Government Effectiveness
- Regulatory Quality
- Rule of Law
- Control of Corruption

Year
All

Country
Togo

Source	1996	1998	2000	2002	2003	2004	2005	2006	2007	2008	2009	2010	2011	2012	2013	2014	2015
African Development Bank Country Policy and Institutional A..		NP	NP	NP	NP	0.40	0.40	0.30	0.40	0.40	0.40	0.40	0.30	0.33	0.33	0.37	0.37
Afrobarometer													0.58	0.58	0.58	0.57	0.57
Bertelsmann Transformation Index					0.25	0.25	0.25	0.25	0.30	0.30	0.35	0.35	0.35	0.40	0.40	0.40	0.40
Economist Intelligence Unit								0.00	0.00	0.00	0.00	0.00	0.00	0.00	0.00	0.00	0.25
Gallup World Poll								0.29	0.29	0.20	0.25	0.25	0.31	0.31	0.31	0.28	0.53
Global Insight Business Conditions and Risk Indicators	0.38	0.38	0.38	0.38	0.38	0.40	0.50	0.50	0.50	0.50	0.50	0.50	0.50	0.50	0.50	0.50	0.50
Global Integrity Index															0.05	0.10	0.10
IFAD Rural Sector Performance Assessments						0.35	0.35	0.35	0.35	0.35		0.39	0.30	0.30	0.30	0.30	0.30
Institutional Profiles Database											0.00	0.00	0.00	0.00	0.00	0.00	0.00
Political Risk Services International Country Risk Guide	0.33	0.33	0.33	0.25	0.25	0.25	0.25	0.25	0.25	0.25	0.25	0.33	0.33	0.25	0.25	0.33	0.33
Transparency International Global Corruption Barometer Survey							0.52	0.52	0.52								0.67
World Bank Country Policy and Institutional Assessments		NP	NP	NP	NP	NP	0.20	0.20	0.20	0.20	0.20	0.30	0.30	0.30	0.30	0.30	0.30

Source: Kaufmann D., A. Kraay, and M. Mastruzzi (2010), *The Worldwide Governance Indicators: Methodology and Analytical Issues*

The Worldwide Governance Indicators are available at: www.govindicators.org

Note: The Worldwide Governance Indicators (WGI) are a research dataset summarizing the views on the quality of governance provided by a large number of enterprise, citizen and expert survey respondents in industrial and developing countries. These data are gathered from a number of survey institutes, think tanks, non-governmental organizations, international organizations, and private sector firms. The WGI do not reflect the official views of the World Bank, its Executive Directors, or the countries they represent. The WGI are not used by the World Bank Group to allocate resources.